



Timeless Tunisian

CTMay07-10



Finished Measurements: Approx 54"/137.16cm x 75"/190.5cm

RED HEART® "Super Saver®": 5 skeins 633 Dark Sage **A**, 4 skeins each of 382 Country Blue **B**, 631 Light Sage **C** and 380 Windsor Blue **D**

Crochet Hook: G-6 (4.5mm) Tunisian/Afghan hook or any size to obtain correct gauge and G-6 (4.5mm) crochet hook
Yarn needle

GAUGE: 17 Tss + 14 rows = 2"/5cm using size G-6 (4mm) crochet hook. **CHECK YOUR GAUGE. Use any size hook to obtain specified gauge.**

NOTES: Chart shows Tss return pass of each row only.

Each vertical line on each row on chart represents a vertical bar of an afghan st.

Each dot on chart represents ch-3 for picot.

Special Abbreviations:

Tss (Tunisian simple stitch) = One row of Tunisian simple stitch is worked in two steps as follows:

Forward Pass (step 1): Sk first vertical bar; *insert hook under next vertical bar, yo and draw up a lp; repeat from * across. **Return Pass (step 2):** Yo and draw through one lp on hook; *yo and draw through 2 lps on hook; repeat from * until only one lp remains on hook (one row of Tss complete).

Long dc = Yo, insert hook under specified st, yo and draw up a lp to height of row in work, [yo and draw through 2 lps on hook] twice.

Beginning joint st = ch 2, skip next st, yo, insert hook in next st, yo and draw up a lp to height of ch-2, yo and draw through all lps on hook.

Joint st = Yo, insert hook in same st where last lp was drawn up, yo and draw up a lp to height of ch-2, sk next st, yo, insert hook in next st, yo and draw up a lp to height of ch-2, yo and draw through all 5 lps on hook.

Cluster (cl) = [yo, insert hook in specified st, yo and draw up a lp to height of ch-2] twice, yo and draw through all lps on hook.

Beginning cluster (beginning cl) = Ch 2, yo, insert hook in same sp as joining, yo and draw up a lp to height of ch-2, yo and draw through all lps on hook.

CENTER PANEL

With **A** and afghan hook, ch 40.

Row 1: Insert hook in 2nd ch from hook, yo and draw up a lp; *insert hook in next ch, yo and draw up a lp; repeat from * across – 40 lps on hook. Work Tss return pass – 40 Tss.

Rows 2-5: Work Tss forward pass and return pass.

Row 6: Work Tss forward pass – 40 lps on hook. For Tss return pass: yo and draw through one lp on hook, [yo and





draw through 2 lps on hook] 19 times; ch 3 to be formed into picot on forward pass of next row; [yo and draw through 2 lps on hook] 20 times – 39 Tss and 1 Tss with picot.

Row 7: Work Tss forward pass, holding ch-3 lp toward front to form picot – 40 lps on hook. For Tss return pass: yo and draw through one lp on hook, [yo and draw through 2 lps on hook] 18 times; ch 3 for picot, [yo and draw through 2 lps on hook] twice; ch 3 for picot, [yo and draw through 2 lps on hook] 19 times – 38 Tss and 2 Tss with picots.

Follow each row on chart from A to D. Working Tss forward pass as before and starting with row 8 of chart for Tss return pass, follow chart until Tss return pass of row 23 is completed, then repeat Rows 6-23 twelve times more, Rows 6-14 once and Row 2 five times more.

Last Row: Sk first vertical bar, sl st in next vertical bar and in each vertical bar across. Fasten off.

NARROW PANELS (make 2 panels each with B, C and D)

With appropriate color yarn and afghan hook, ch 20.

Row 1: Insert hook in 2nd ch from hook, yo and draw up a lp; *insert hook in next ch, yo and draw up a lp; repeat from * across – 20 lps on hook. Work Tss return pass – 20 Tss.

Rows 2-5: Work Tss forward pass and return pass.

Row 6: Work Tss forward pass – 20 lps on hook. For Tss return pass: yo and draw through one lp on hook, [yo and draw through 2 lps on hook] 9 times; ch 3 to be formed into picot on forward pass of next row; [yo and draw through 2 lps on hook] 10 times – 19 Tss and 1 Tss with picot.

Row 7: Work Tss forward pass, holding ch-3 lp toward front to form picot – 20 lps on hook. For Tss return pass: yo and draw through one lp on hook, [yo and draw through 2 lps on hook] 8 times; ch 3 for picot, [yo and draw through 2 lps on hook] twice; ch 3 for picot, [yo and draw through 2 lps on hook] 9 times – 18 Tss and 2 Tss with picots.

Follow each row on chart from B to C. Working Tss forward pass as before and starting with row 8 of chart for Tss return pass, follow chart until Tss return pass of row 23 is completed, then repeat rows 6-23 twelve times more, Rows 6-14 once and row 2 five times more.

Last Row: Sk first vertical bar, sl st in next vertical bar and in each vertical bar across. Fasten off.

PANEL BORDER

Row 1: With crochet hook and right side facing, join D with sl st in lower-right-hand corner of any panel; working across long edge, ch 1, sc in corner, sc in end st of next

row; *long dc under 4th afghan st bar below next end st; sk end st behind long dc, sc in end st of next 3 rows; repeat from * across, ending with sc in end st of last 2 rows – 253 sts. Fasten off. Do not turn.

Row 2: With right side facing, join C with sl st in first sc, ch 1, sc in back lp of same sc, sc in back lp of next 2 sts; *long dc under 3rd afghan st bar below next st, sk st behind long dc, sc in back lp of next 3 sts; repeat from * across, ending with sc in back lp of last 5 sts. Fasten off. Do not turn.

Row 3: With right side facing, join B with sl st in first sc, ch 1, sc in back lp of same sc, sc in back lp of next 3 sts; *long dc under 2nd afghan st bar below next st, sk st behind long dc, sc in back lp of next 3 sts; repeat from * across, ending with sc in back lp of last 4 sts. Fasten off. Do not turn.

Row 4: With right side facing, join A with sl st in first sc, ch 1, sc in back lp of same sc, sc in back lp of next 4 sts; *long dc under first afghan st bar below next st, sk st behind long dc, sc in back lp of next 3 sts; repeat from * across. Fasten off.

Work Rows 1-4 of Panel Border across other long edge of same panel. Work Panel Border on both long edges of each remaining panel.

JOINING

With lower edge of each panel at same end and right sides facing, join panels along long edges in following order: D, C, B, A, B, C, D. To join panels: Place first two panels side by side. Join D with sl st in lower-right-hand corner of first panel. Working loosely throughout, sl st in back lp of same st as joining; *sl st in back lp of corresponding st on second panel, sl st in back lp of next st on first panel; repeat from * across. Fasten off.

EDGING

Round 1: With crochet hook and right side facing, join D with sl st in upper-right-hand corner; working in sts of Panel Border and in end sts of rows along narrow edge; work beginning joint st, ch 1; *work joint st, ch 1; repeat from * across to next corner; work cl in corner, ch 1; repeat from * around, working joint sts in back lp of sts along Panel Border. Join with sl st in top of beginning joint st. Fasten off.

Round 2: Join C with sl st in last ch-1 sp made; work beginning cl; ch 1; *work joint st in same sp where last lp was drawn up and in next ch-1 sp; ch 1; repeat from * across to next corner, working end of last joint st in ch-1 sp before next cl; work cl in same sp where last lp was drawn up, ch 1, joint st in same sp where last lp was drawn up





and in next ch-1 sp for corner, ch 1**; cl in same sp where last lp was drawn up, ch 1; repeat from * around, ending final repeat at **. Join with sl st in top of beginning cl. Fasten off.

Round 3: With B, work same as Round 2.

Round 4: With A, work same as Round 2.

FINISHING

Weave in all ends.

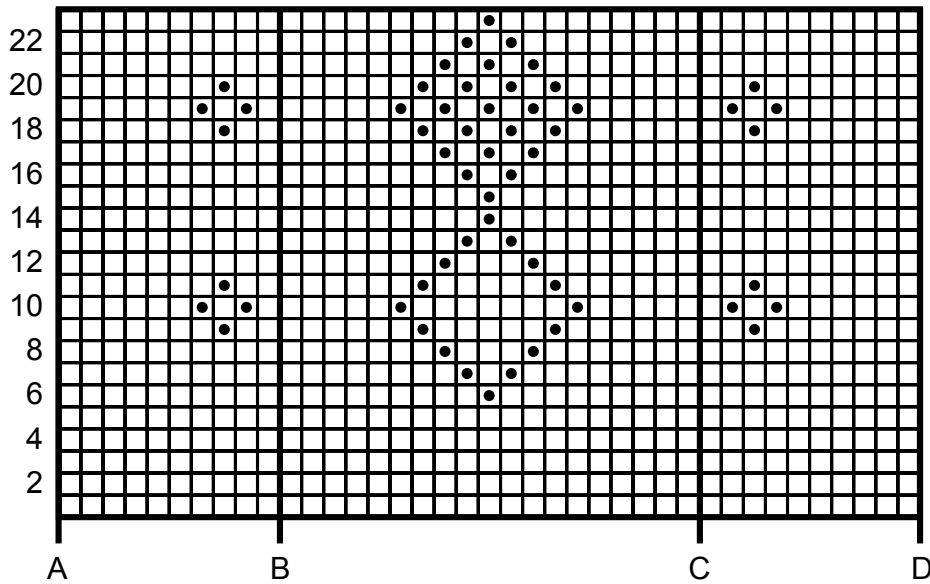


RED HEART® "Super Saver®", Art. E300, 7oz/198g, 64yds/333m

Abbreviations: ch = chain; dc = double crochet; lp(s) = loop(s); sc = single crochet; sk = skip; sl st = slip stitch; st(s) = stitches; yo = yarn over; * Repeat directions following * as many times as indicated; [] = Work directions inside brackets as many times as indicated.

CHART KEY

- | = Vertical bar of tss (Tunisian simple stitch)
● = Ch-3 picot



CHART

CHART SHOWS SECOND HALF OF ROWS ONLY.

